

SAN FRANCISCO ZOOLOGICAL SOCIETY  
**ANNUAL REPORT**  
**FISCAL YEAR 2016 - 2017**



American black bears - Juneau and Valdez  
*Ursus americanus*

ACCREDITED BY THE  
**ASSOCIATION  
OF ZOOS &  
AQUARIUMS**

CONNECT CARE CONSERVE

ABOUT THE COVER

## Rescued Black Bear Cubs Join the San Francisco Zoo Family

**THE MISSION**  
OF THE SAN FRANCISCO  
ZOOLOGICAL SOCIETY IS TO  
**CONNECT** PEOPLE WITH WILDLIFE,  
INSPIRE **CARING** FOR NATURE AND  
ADVANCE **CONSERVATION ACTION**.

The female and male cubs featured on the cover of this year's annual report were rescues found this past spring far apart in Alaska's wilderness. These cubs, who are unrelated and both less than one year old, were found orphaned and in starving condition. In March 2017, the Department of Interior changed its policy to allow for hunting of hibernating bears. These cubs may have been orphaned as a result of the hunting deaths of their mothers. The cubs came to the San Francisco Zoo after rehabilitation at the Alaska Zoo and are thriving in their new home. Animal rescue is an important component of the Society's strategic vision, tying together our work in animal conservation, wellness, and advocacy, as well as raising awareness of human impact on animal habitats and the environment.



Female found outside Juneau, Alaska, June 2017.



Male found outside Valdez, Alaska, May 2017.

Special thanks to our volunteer photographers, Marianne Hale and May Woon, for their contributions.



Dear Friends:

What is your Zoo story? Each one of us has a unique connection to the Zoo whether as a visitor, donor, volunteer, partner, or staff member. In this fiscal year 2016–2017 annual report, we are pleased to share a collection of vignettes and stories that together tell the larger narrative of today’s San Francisco Zoo and Gardens as a vibrant space for animal advocacy, conservation, wellness, and community education and engagement.

Through the course of the enclosed narrative, we highlight aspects of our story that are often less well known but equally important to the Zoo’s impact as an educational and recreational community resource. This mission work includes the significant field contributions of our amazing staff and their roles as research scientists, veterinary practitioners, and leaders advancing the treatment and protection of wildlife. All of this is further enhanced by our extensive partnerships with external veterinary professionals, wildlife advocates, and educators. Where these internal and external communities intersect is often where the true magic of the Zoo happens. Here are just a few of our favorite stories:

- Our groundbreaking animal wellness and enrichment activities inform our work and the work of colleagues around the world. Examples include our Foobler ball enrichment experiments with our rhino *Boone*, which will soon be available for other zoos to replicate, and a first-of-its-kind back surgery on a komodo dragon performed in partnership with UCSF, highlighted on page 8.
- Our dynamic new spaces and exhibits elevate animals’ quality of life and enhance visitors’ learning. Examples include our renovated flamingo exhibit that allows coming generations of flamingos to be fully flighted, a pop-up coastal research center that is providing research opportunities and partnerships, and an expanded great ape habitat designed to address the needs of aging primates. Of course, none of this is possible without the immense generosity of our donors. You can read more about each of these exhibits and some of the donors who supported them in the timeline starting on page 2.
- Our renewed long-term commitment to “active conservation programs that aid species survival, research, and conservation, both at home and in the field.” These conservation priorities align to policies outlined by the American and World Association of Zoos and Aquariums. They shape our on-site breeding and acquisitions and similarly guide our field work. Our preservation work to re-populate the San Francisco forktail damselfly in the City’s Presidio further demonstrates the rigor of our methods and the importance of strong cooperative partnerships, in this case with the Presidio Trust and National Park Service, to achieve success. Read more about our conservation activities on page 9.

The sum of these activities and relationships, guided by the strong strategic vision of the San Francisco Zoological Society Board of Directors, is a San Francisco Zoo and Gardens that is more relevant than ever as a safe harbor for animals, as a provider of wellness programs and responsible wildlife conservation efforts, and as a community resource for education and advocacy. Whatever your connection to the Zoo, we hope you enjoy this annual report and the stories of our work. Better yet, why not come out to visit and create your own next Zoo story?

Sincerely,

Tanya M. Peterson, J.D.  
CEO & Executive Director

Edward G. Poole  
Chair, Board of Directors

*P.S. To become a San Francisco Zoological Society member, please visit [www.sfzoo.org/join](http://www.sfzoo.org/join).*



AUGUST 19, 2016

## GRAND OPENING OF COQUEREL'S SIFAKA EXHIBIT

Adorable and inquisitive sifakas *Karen* and *Neil* join our Lipman Family Lemur Forest – the largest mixed-species lemur exhibit in the country. The new sifakas exhibit, also funded by Barry and Marie Lipman, features an 18-foot fony baobab tree – an excellent launchpad for these small but mighty creatures that can leap 20 feet in a single bound. This centerpiece of our Madagascar exhibit is the Zoo's biggest addition this year and the biggest sifaka exhibit in any zoo.



## ZOO TIMELINE 2016-2017



**JULY 16, 2016**  
**Celebrating Our Zoo Crew** We commemorate the enthusiastic efforts of 34 middle-school Zoo Crew volunteers with a fun day at the Zoo. These students devoted 550 hours over 12 months towards habitat restoration projects around San Francisco, including Mountain Lake in the Presidio and Lake Merced.



## MARCH OF THE PENGUINS

**JULY 30, 2016**  
**March of the Penguins** Our Magellanic penguin chicks participate in this annual rite of passage, trekking through the Zoo to join their colony on Penguin Island. Cuteness abounds.



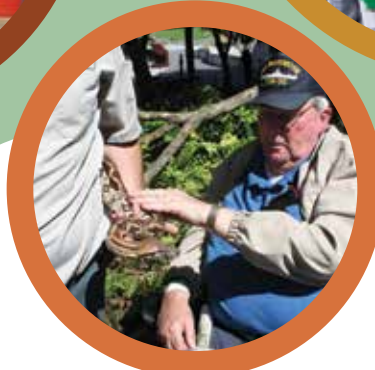
**AUGUST 6, 2016**  
**Nature Trail Reunion Party** 600+ attendees celebrate 2,500 alumni and 40 years of the Nature Trail, one of the Zoo's most enduring volunteer programs. Fun fact: 12 current Zoo employees got their start on the Nature Trail!



**AUGUST 2016**  
**Another Successful Year of Zoo Camp!** More than 1,800 youth aged 4 to 17 expanded their knowledge of animals and summer fun at Zoo Camp. Enrollment this year was the highest yet!

SEPTEMBER 30, 2016  
**ZOO II'S FUR BALL 2016**

Our Zoo II volunteer corps of young professionals support the Zoo with quarterly philanthropic activities. "Fur Ball 2016: Where the Wild Things Are," chaired flawlessly by Willa Moore, raises \$56,000 from 300 attendees.



**AUGUST 31, 2016  
 Ocean Beach Cleanup**  
 Dozens of Zoo staff cross the Great Highway to take part in an Ocean Beach cleanup. Why? Our commitment to protect and preserve animals and natural habitats doesn't end at the Zoo's gates. Keeping the environment clean is all of our responsibility.

**SEPTEMBER 14, 2016  
 Honoring Veterans at the Zoo** 420+ veterans and their caretakers enjoy a day at the Zoo with complimentary admission, lunches provided by Veterans of Foreign Wars Post #4103, guided tours, and unforgettable animal encounters. This 5th annual event is just one of the many ways the Zoo opens its doors to our larger community.

**SEPTEMBER 17, 2016  
 International Red Panda Day** We celebrate *Tenzing*, *Hillary*, and *Hunter*, the Zoo's red panda trio, with a day of keeper talks, a special take-home activity book with fascinating facts on red pandas, plus a special hand-made keepsake courtesy of our Zoo staff.

**OCTOBER 2016  
 ZooMobile Reaches More Bay Area Students** Our amazing educational team designed new lessons on animal movement and climate change conundrums, adding to the five popular lessons offered through this mobile classroom. ZooMobile brought STEM curricula and favorite animal ambassadors to 71 underserved elementary, middle, and high school classrooms in the Bay Area this year!



MARCH 2017

## RED IVORY EXHIBIT OPENS

This powerful six-minute video by Zoo artist-in-residence Henry Jackson takes viewers on a journey depicting the past, present, and future of elephants and the threat poaching poses to these majestic animals' survival.

Can you imagine a world without elephants? We can't, thus the Red Ivory exhibit, which expands the Zoo's commitment to the "Stop Ivory Trade" campaign and our invitation to visitors to pledge their support for this critical effort. Our thanks to John and Michele McNellis (pictured here at left), whose generosity fully funded this project.



**Boo at the Zoo**

OCTOBER 2016

**Boo at the Zoo** This spectacular two-day Halloween event drew 10,000+ visitors for trick or treating, a costume parade, a Pumpkin Stomp & Chomp, a haunted Nature Trail, and creepy, crawly Insect Zoo fun. Also in October: ZOOctoberFest, our new signature event offering Halloween activities, OktoberFest-inspired beer, German food and music, a 5,000 square-foot hay maze, and, of course, access to our stellar animal exhibits.

OCTOBER 2016

**Lion House Improvements** Our re-lit, re-roofed, and redesigned Lion House features a larger night enclosure and glass walls that benefit the animals' daily lives and visitors' experience. Our thanks to George and Linnea Roberts, whose support made this possible. Our devoted docents also raised money to build a platform for the big cats, vastly improving guests' sightlines and affording the animals an elevated space to observe their domain.

DECEMBER 2016

**Quarterly Senior Strolls** One of our most popular community engagement programs, Senior Strolls offer members of our elder community quarterly early morning guided walking tours of the Zoo and reduced admission.

DECEMBER 16-29, 2016

**ZooLights** Over its 13-night run, 20,000-plus visitors enjoyed the Zoo bathed in colorful holiday lights, visits with Santa and his reindeer *Belle*, *Holly*, and *Peppermint*, and a festive holiday marketplace featuring seasonal food and music.

**ZOO Lights**  
SAN FRANCISCO ZOO

MARCH 2017

## GREAT APE PROJECT GROUNDBREAKING!

This multimillion dollar renovation of the Pachyderm building, brought to fruition by major gifts from Beth Anderson and the estate of Lois Kalb, will create a new state-of-the-art indoor viewing exhibit and expanded habitat with customized features to accommodate the needs of our geriatric great apes. It will connect to the chimpanzee grottoes via the Jim Ludwig Passage, a dramatic overhead walkway named for our long-time donor, board member, and all-around Zoo champion. (Jim Ludwig is center in the photo at right.)



JANUARY 2017

**Marriott Adopts Our Asian Rhino** A generous \$10,000 donation from the Marriott Marquis and Marriott corporate headquarters brings upgrades to the habitat of Asian rhino *Gauhati*. Marriott has been a committed advocate of the Zoo, particularly our rhinos, through the Renew the Zoo corporate engagement program.

FEBRUARY 2017

**It's Year of the Rooster!** We ring in the Lunar New Year with two weekend celebrations featuring traditional lion dancing and folk dancing, a lunar zodiac scavenger hunt with fun facts about the animals found on the Chinese calendar, and free access to the celebration for those born in the Year of the Rooster.

MARCH 9, 2017

**Birds of a Feather Ladies Auxiliary Luncheon** This colorful fundraiser in the Neiman Marcus Rotunda celebrates exotic birds and showcases participants donning the finest in millinery fashion. Hosted this year by dynamic duo co-chairs Lisa Keith and Zoological Society Board Member Mindy Henderson, 100 guests raised over \$50,000 to support the Zoo's conservation and education programs.

APRIL/MAY 2017

### Farewell to *Uulu* and *Elly*

Polar bear *Uulu* passed away in April from heart failure at the age of 36. One of the longest lived polar bears in recorded Zoo history, *Uulu* was a favorite of visitors and staff, from the day she arrived in 1985 as a mischievous rescue from Churchill, Canada, to her last time playing in a 10-ton bed of snow on International Polar Bear Day in March 2017.

In May, our beloved black rhino *Elly* died from advanced age at 46. *Elly* – the oldest black rhino in the country by five years – played a significant role in preserving this critically endangered species. *Elly* produced 14 calves, 15 grand calves, 6 great grand calves, and 1 great-great grand calf. The longevity of *Elly* and *Uulu* speaks to the excellent care both received at the Zoo.



APRIL 28, 2017

## ZOOFEST 2017 RAISES \$1 MILLION FOR SF ZOO!

400 participants hear ZooFest’s “Call of the Wild,” enjoying fine cuisine, dancing, a spirited live auction, and a far-reaching fund-a-need campaign in support of the Zoo’s conservation and education programs. Chaired by Zoological Society Board Member Elizabeth Minick and Jeff Minick, this year’s event recognized Bank of America and its long partnership with the San Francisco Zoo.



MAY 2017

### Salesforce and SF Unified School District Partner on Zooforce

The 4th annual Zooforce connects enthusiastic Salesforce volunteers with 300 sixth graders from Denman Middle School for mentoring and animal behavior studies. Salesforce is a major participant in Renew the Zoo, which engages volunteer corporate groups in restoration, conservation, and exhibit refurbishment projects.

MAY 2017

### A New Zoo Website

Our new website is mobile-friendly and provides easier-to-access ticketing information, customer service, and news on our animals and upcoming programs. Do you agree? Tell us what you think!

MAY 2017

### Tarantula Exhibit Opens

Some say the fear induced by these gentle giants of the arachnid class is simply misplaced. Visitors have a chance to decide for themselves at this up-close special exhibit. Our Guardian major donor members enjoyed a preview of the exhibit, which included sampling “Tarantula Tea,” a unique herbal calming blend created exclusively for the occasion by local Fabula Tea company.

JUNE 24-25, 2017

### Hearst Grizzly Gulch 10th Anniversary

Festivities for the 10th anniversary of Grizzly Gulch and the always entertaining grizzly sisters *Kachina* and *Kiona* included the ever-popular feeding, extra keeper and docent talks on all things grizzly, face painting, picture taking, and fascinating stories on bears.



SUMMER 2017

## POP-UP OCEAN RESEARCH CENTER

The George and Judy Marcus family helped to construct this temporary Coastal Conservation Education and Research Center on the former site of the Fleishacker pool near the Great Highway. The center's perfect location overlooking the Pacific and three marine sanctuaries (the Greater Farallones, Cordell Bank, and Monterey Bay), facilitates Zoo research, including a partnership with the National Oceanic and Atmospheric Administration (NOAA), and extends our education activities beyond the immediate Zoo grounds. Our special thanks to Zoological Society Board Member Margaret Hauben who provided the seed funding for this initiative and formed our Oceans Advisory Council, which sparked the initial vision for this research facility.



JUNE 2017

### Summer of Love Celebration at the Zoo

The Zoo embraced the 50th anniversary of the Summer of Love with a "Love Your Zoo" campaign with special summer giving opportunities and tie-ins to city-wide celebrations of this colorful time in San Francisco history.

JUNE 2017

### Stanford Students Study Zoo Life

Dr. Jason Watters, the Zoo's vice president of wellness and animal behavior, is preparing his next class for Stanford University sophomores: "Life in the Zoo: Behavior, Welfare, and Enrichment." The field course gives students hands-on experience designing animal exhibits that both enrich and engage animals and fulfill the complex mission of a zoo.

# ANIMAL ARRIVALS

We are thrilled to welcome to our Zoo family the following animals, who arrived during the 2016–2017 fiscal year through a mix of live births, rescues, and acquisitions.



Andean condor *Allan* arrives in February 2017 and is ready for breeding! He's named after long-time docent, master birder, and major donor Allan Ridley.



Thanks to donors Barry and Marie Lipman, we welcomed new blue-eyed black lemurs *Elyse* and *Story* to the Lipman Lemur Forest. Interesting fact: *Elyse* is anatomically male, though he changed to female coloration several years ago. Hormonal imbalances of unknown etiology can cause this change in color.



Francois' langur monkey *Kerr*, named in honor of Golden State Warriors head coach Steve Kerr, was born in May 2017 to mother *Kathleen* and father *Jun Wan*. *Kerr* was the second Francois' langur monkey born this year at the Zoo.

- 2 American black bears
- 1 Nine-banded armadillo
- 2 Hadada ibis
- 1 Guanaco
- 3 Four-toed hedgehogs
- 2 Kune kune pigs
- 4 Chilean flamingos
- 2 Bali mynahs
- 2 Roseate spoonbills
- 1 Hill wallaroo
- 1 Mandrill
- 7 Magellanic penguins
- 2 Palm cockatoos
- 1 Greater kudu
- 1 Blue-winged teal
- 1 Black howler monkey
- 4 Box turtles
- 1 Red-ruffed lemur
- 1 Eastern bongo
- 1 Blue-tongued skink
- 5 Domestic polecats
- 4 Sacred ibis
- 1 Pacific pond turtle
- 4 Red-sided Eclectus parrot
- 1 Cane toad
- 1 Blue-legged mantilla
- 5 Pink-backed pelicans
- 1 Domestic chicken
- 1 Harris's hawk (bay-winged hawk)
- 5 Temminck's tragopans
- 1 Crested oropendola
- 2 Bearded dragons
- 1 Royal/ball python
- 2 Golfodulcean poison dart frogs
- 3 Henkel's leaf-tailed geckos

# ANIMAL WELLNESS AND ENRICHMENT



## Groundbreaking Surgery and Rehabilitation for Our Komodo Dragon

In 2015, komodo dragon *Big Daddy Bahasa* was facing long-term hind leg paralysis due to congenital spinal defects. With our commitment to exemplary wellness and enrichment approaches that enhance the long-term quality of life of the animals in our care, there was no question we would do whatever we could to help *Big Daddy*. To that end, SF Zoo partnered with UCSF Medical Center doctors on a first-of-its-kind surgery on a komodo dragon to fuse *Big Daddy Bahasa's* vertebrae in an attempt to reverse his paralysis.

Eighteen months post-surgery, *Big Daddy* had the pins in his back removed in June. Now, the real work begins – a tailored physical therapy regimen to help him build strength and regain mobility. After all of his hard work, *Big Daddy* will get to relax in a new habitat funded by Board Member Emeritus Barry Lipman and his wife Marie (who also chose *Big Daddy's* name for him!).

*Big Daddy Bahasa's* story is just one example of the groundbreaking wellness work the San Francisco Zoological Society does within our Zoo walls to support the physical and mental health of our animals – from replicating their natural habitat as best we can within the Zoo environment, to providing them choices and opportunities for stimulating enrichment, to engaging in partnerships that further elevate the welfare of wildlife. Studies show that animals can thrive in captivity when their wellness is prioritized in every aspect of their care.

Here are more examples of our actions in this area during 2016-2017. Some are playful, others are medically focused, but all prioritize our animals' health and quality of life:

> Hippo *Bruce Bochy* receives a specially built hippo-proof shower that allows him to bathe whenever the mood hits and enjoy another favorite past-time – catching shower spray in his mouth.



> SF Zoo researchers continue to study how a specially built rhino Foobler ball, a timed feeder puzzle originally used for dogs, can enrich life for our black rhino *Boone* and promote actions that mimic foraging in the wild. We partnered with external builders to design and construct the device and will soon be making it available to zoos worldwide.

> Stanford's Packard Children's Health Alliance donated a cardiac ultrasound machine, giving SF Zoo staff the ability to obtain high quality echocardiograms of our animals. This is especially useful with our apes, who are prone to heart disease.

> Partnership with veterinary rehabilitation specialist Erika Gebhardt from Nor Cal Veterinary Emergency and Specialty Hospital gives our animals access to rehabilitation and physical

therapy to address age- and injury-related ailments. Nor Cal also generously provides CT scans for the Zoo's animals free of charge.

> Charismatic crow *Russell* (yes, *Russell Crow*), whose foot was amputated after a severe injury, received a prosthetic foot crafted by Zoo staff and vet technician and artist Melissa Christensen.



> Blind sea lion *Henry* receives cataract eye surgery in his left eye in an attempt to restore some sight and alleviate eye discomfort. His long recuperation includes training to accept eye drops and three weeks out of the water to promote safe healing of his eye.

> Redesign of the Charlot Malin Memorial Flamingo Habitat provides these graceful birds space to fly. This eases the need to pin the birds' wings, so flamingos born in the exhibit now remain fully flighted.

# CONSERVATION AND PROTECTION

## Breeding the Forktail Damselfly Population One Egg at a Time

A mind's-eye pondering of the San Francisco Zoo and Gardens likely conjures images of animals in action at Grizzly Gulch, Penguin Island, or the Lion House. But what's missing from this picture is the



often less well known but significant work we do to advance animal conservation and protection. The modern zoo is a preservation center that collaborates with other zoos to intentionally manage animal diversity and safe breeding of species globally – and the San Francisco Zoo is a modern zoo in every sense of this definition. As conservationists in active partnerships like the Species Survival Plan through the World Association of Zoos and Aquariums, the preservation work of our research and keeper staff expands the Zoo's reach and impact into our local, national, and international communities.

Our efforts to breed the San Francisco forktail damselfly over the past two years is an excellent case study on our contributions to the field of animal preservation. Once on the endangered list, this rare, beautiful relative of the larger dragonfly is native to San Francisco's Presidio. Habitat loss moved them to the park's Fort Point shore, an unfortunately inhospitable breeding spot known for rough surf. Insect Zoo staff designed and tested a safe process for collecting and breeding these damselflies at the Zoo, starting with just four adult females and four adult males. Staff have been overseeing damselfly growth through the larval stage at the Zoo, then transporting them back to the Presidio in various stages of development – sometimes releasing batches of eggs as large as 900 at a time, other times releasing just a handful of juveniles and adults. None, however, is being released to probable death at Fort Point. Instead, Zoo staff are working in partnership with the Presidio Trust and National Park Service to introduce the damselfly into the friendlier environs of the park's recently restored Mountain Lake. We're closely monitoring the reintroduction of this rare Odandate species back into the Presidio. The future is looking bright so far for the growing forktail damselfly community.

Of course, we could not do any of this work without funders like the Stephenson Family who created a conservation endowment fund. For more information about our endowment fund, please contact our Philanthropy Department at 415-753-7173 or [development@sfzoo.org](mailto:development@sfzoo.org).

## Other highlights of our 2016-2017 conservation work:

- > 62 Sierra Nevada yellow-legged frogs reintroduced into Lake Tahoe Basin Desolation Wilderness Area
- > 119 mountain yellow-legged frogs treated and reared at the Zoo for reintroduction to Sequoia National Park.
- > Zoo staff partnered with SEKI Fire and Rescue Crew, UC Santa Barbara, and the National Park Service to collect another 226 yellow-legged frog tadpoles and froglets. 111 were helicoptered to the Zoo's Wellness and Conservation Center for treatment and rearing.



- > 22 western pond turtles released in Lake County
- > We launched the Red Ivory Pledge on World Elephant Day in support of the campaign to stop the illegal ivory trade. Nearly 5,000 Zoo visitors have signed the pledge already.
- > Our Coastal Conservation Education and Research Center pop-up facility opens for use by Zoo staff and external research partners, as well as teen Zoo Camp participants.
- > Zoo veterinarians are part of an international and local team in Madagascar who vaccinated 1,852 chickens to protect them from the highly contagious and life-threatening Newcastle virus.

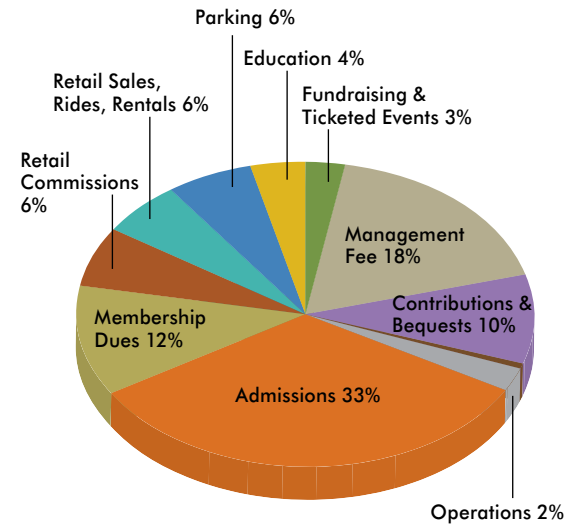
# Statement of Financial Position Years Ending June 30, 2017 and 2016

CURRENT ASSETS	<u>2017</u>	<u>2016</u>
Cash and Cash Equivalents . . . . .	\$ 3,645,325	\$ 3,860,339
Contributions Receivable . . . . .	331,000	503,502
Bequests and Other Receivables . . . . .	297,976	498,741
Prepaid Expenses . . . . .	<u>331,584</u>	<u>222,527</u>
<b>Total Current Assets</b> . . . . .	<b>4,605,885</b>	<b>5,085,109</b>
INVESTMENTS . . . . .	7,579,622	6,835,960
PROPERTY AND EQUIPMENT, NET . . . . .	<u>645,956</u>	<u>611,825</u>
<b>TOTAL ASSETS</b> . . . . .	<b>\$ 12,831,463</b>	<b>\$ 12,532,894</b>
Liabilities and net assets		
CURRENT LIABILITIES		
Accounts Payable . . . . .	\$ 625,320	\$ 860,919
Accrued Expenses . . . . .	1,090,844	1,312,021
Deferred Revenue . . . . .	1,272,735	1,292,197
Current Portion of Long-Term Debt . . . . .	148,482	166,887
Due to the City and County of San Francisco . . . . .	<u>155,542</u>	<u>235,022</u>
<b>Total Current Liabilities</b> . . . . .	<b>3,292,923</b>	<b>3,867,046</b>
Long-Term Debt, Net . . . . .		<u>148,482</u>
<b>Total Liabilities</b> . . . . .	<b><u>3,292,923</u></b>	<b><u>4,015,528</u></b>
NET ASSETS		
Unrestricted . . . . .	3,052,310	2,356,412
Temporarily Restricted . . . . .	2,235,382	1,913,906
Permanently Restricted . . . . .	<u>4,250,848</u>	<u>4,247,048</u>
<b>Total Net Assets</b> . . . . .	<b><u>9,538,540</u></b>	<b><u>8,517,366</u></b>
<b>TOTAL LIABILITIES AND NET ASSETS</b> . . . . .	<b>\$ 12,831,463</b>	<b>\$ 12,532,894</b>

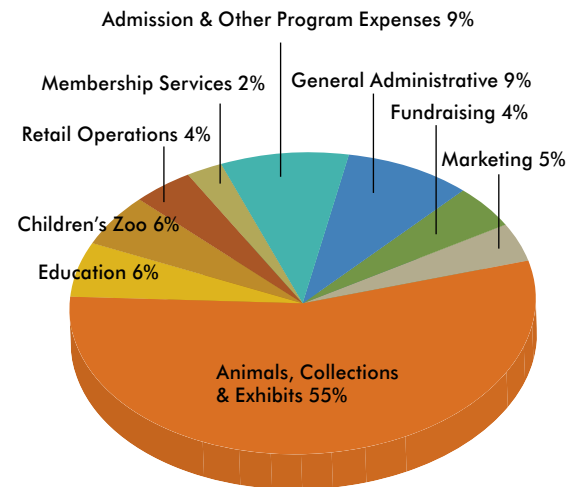
# Statement of Activities Years Ending June 30, 2017 and 2016

<b>UNRESTRICTED NET ASSETS</b>	<u>2017</u>	<u>2016</u>
<b>REVENUES AND SUPPORT</b>		
Program Revenues:		
Admissions	\$ 7,556,979	\$ 7,672,298
Membership Dues	2,683,611	2,683,210
Retail Commissions	1,446,077	1,496,768
Retail Sales, Rides, and Rentals	1,390,204	1,442,135
Parking	1,372,588	1,121,094
Education	894,654	809,356
Fundraising and Ticketed Events (Net of direct benefit to donors of \$427,073 in 2017 and \$360,461 in 2016)	<u>693,034</u>	<u>375,172</u>
<b>Total Program Revenue</b>	<b>15,983,147</b>	<b>15,600,033</b>
Other Support:		
Management Fee	4,120,000	4,120,000
Contributions and Bequests	2,159,430	2,284,125
Other Income	7,173	10,121
Satisfaction of Restrictions, Operations	<u>535,002</u>	<u>751,208</u>
<b>Total Revenues and Support</b>	<b><u>22,804,752</u></b>	<b><u>22,765,487</u></b>
<b>OPERATING EXPENSES:</b>		
Program Services:		
Animals, Collections, and Exhibits	12,304,765	12,703,275
Education	1,289,296	1,458,446
Children's Zoo	1,244,893	1,276,574
Retail Operations	937,928	921,615
Membership Services	550,818	911,086
Admissions and Other Program Expenses	<u>2,094,154</u>	<u>1,734,819</u>
<b>Total Program Services</b>	<b><u>18,421,854</u></b>	<b><u>19,005,815</u></b>
Supporting Services:		
General and Administrative	1,958,082	1,637,396
Marketing	1,070,983	1,021,933
Fundraising	<u>910,383</u>	<u>870,684</u>
<b>Total Supporting Services</b>	<b><u>3,939,448</u></b>	<b><u>3,530,013</u></b>
<b>Total Operating Expenses</b>	<b><u>22,361,302</u></b>	<b><u>22,535,828</u></b>
<b>INCOME FROM OPERATIONS</b>	<b>\$ 443,450</b>	<b>\$ 229,659</b>
Investment Income (loss)	714,879	(340,506)
Depreciation Expense	(175,498)	(173,616)
Capital Expenditures to be Gifted to the City and County of San Francisco	(2,103,427)	(1,525,275)
Other Capital Expenditures	(282,560)	(127,519)
Satisfaction of Restrictions, Capital	<u>2,099,054</u>	<u>1,652,794</u>
<b>INCREASE (DECREASE) IN UNRESTRICTED NET ASSETS</b>	<b><u>695,898</u></b>	<b><u>(284,463)</u></b>
<b>TEMPORARILY RESTRICTED NET ASSETS</b>		
Contributions	2,927,428	2,478,642
Investment Income	28,104	30,458
Satisfaction of Restrictions, Operations	(535,002)	(751,208)
Satisfaction of Restrictions, Capital	(2,099,054)	(1,652,794)
<b>INCREASE IN TEMPORARILY RESTRICTED NET ASSETS</b>	<b><u>321,476</u></b>	<b><u>105,098</u></b>
<b>PERMANENTLY RESTRICTED NET ASSETS</b>		
Contributions	<u>3,800</u>	<u>15,000</u>
<b>INCREASE (DECREASE) IN NET ASSETS</b>	<b>1,021,174</b>	<b>(164,365)</b>
<b>NET ASSETS, Beginning of Year</b>	<b><u>8,517,366</u></b>	<b><u>8,681,731</u></b>
<b>NET ASSETS, End of Year</b>	<b>\$ <u>9,538,540</u></b>	<b>\$ <u>8,517,366</u></b>

## REVENUES AND SUPPORT



## OPERATING EXPENSES



## San Francisco Zoological Society Senior Staff

Tanya Peterson, Esq.\*\*\*

*Chief Executive Officer and Executive Director*

Joe Fitting,

*Deputy Director and Director of Human Resources*

Vincent Grubbs, \*\*\*

*Chief Financial Officer*

David Bocian,

*Vice President of Animal Care and Enrichment*

Christopher Connors,

*Vice President of Operations*

Bob Cooney,

*Vice President of Visitor Engagement*

Eric Maul,

*Vice President of Institutional Advancement*

Jason Watters, Ph.D.

*Vice President of Wellness, Animal Behavior, and Veterinary Hospital*

Robin Wu, MBA

*Vice President of Education & Community Engagement*

Timothy Wu, Esq.

*Vice President of Philanthropy*

\*\*\* Officers

## Board of Directors

Edward Poole, Esq., *Board Chair*

Tanya Peterson, Esq., *Chief Executive Officer and Executive Director \**

Joshua S. Adler, M.D.

Maria Alvarez

William Andereck

Elena M. Asturias

Rosemary Baker

Matthew Cook

David L. Dixon, Esq.

Alexander P. Doll

Melinda Eisenhut-Dunn

John Patrick Flynn

Antoinette Freitas-Krajcar

Janie Friend

Sarah L. Gammill

Sidney Goodwill

Vincent Grubbs, *Chief Financial Officer \**

Margaret Hauben

James E. Hays

Julia L. W. Heidmann

Melinda Henderson

Nicole Lampsa Hsueh

William L. Hudson, Esq., *Secretary*

Arthur Humphrey

Michael Kahn

Donna Egan Kampschuur

Alexis Krivkovich

Yasunobu Kyogoku

Richard F. Lawson, Jr.

Dexter F. Lowry

James J. Ludwig, *Vice Chair*

Melissa Ma

Douglas Magowan

Gregory Malin

Kevin Marchetti

Elizabeth Philips Minick

Joan Murphy

Edward A. Oates, *Vice Chair*

Shawn O'Neill

Derek Reisfield

Mark Roberts

Sarah Anne Schoellkopf, Ph.D.

Scott Setrakian

Edward T. Sickel IV

David Thomason

David Traitel

Charley Zeches

Alan P. Zimmerman

\* *Ex-Officio*

## Emeritus Board of Directors

William S. Andereck, M.D.

Mary Jane Armacost+

Bruce Bligh

Donna L. Carnes

Mitchell Cohen

Barnaby Conrad III

James Coulter

Gordon Dean+

John Dimalanta

W. Brewster Ely III

Jacqueline Erdman

James T. Farrell

Hugh W. Foster

M. Ian Gilchrist

David Grubb

Ann T. Hale

Constance Colladay Hooker

Paul J. Jansen+

Brenda C. Jewett

Kevin D. Johnson

Rupert H. Johnson, Jr.

E. Richard Jones+

Watson M. Laetsch

Lisa Lenzo

Barry R. Lipman, Esq.

Connie Lurie

Merrill L. Magowan+

Tracy Matthes

Michael W. Michelson

G. Robert Muehlhauser

Paul Newman

Susan Oberndorf

Louise Patterson

Sonne G. Pedersen

Robert Pedrero+

Nick Podell+

Helen L. Rietz

Fred A. Rodriguez, Esq.

Guy Rounsaville

Leslie Schilling

Gail Secchia

Charlotte Mailliard Shultz

Stephen V. R. Spaulding III+

David Stanton+

Edgar N. Stone+

Stanley Stroup

Theodore H. Swindells

Christian D. Valentine

Mark Vander Ploeg

Sandra Cooper Woodson

William Zellerbach

+ *Former Board Chair*

## San Francisco Zoological Society Auxiliary

The San Francisco Zoological Society Auxiliary women's group hosted the "Birds of a Feather" luncheon and KidsFest 2016, drawing attention to the Zoo's conservation, education, and capital projects while raising \$88,000 to support the Zoo.

Lori Shigekane, *President*  
Michelle Molfino, *Vice President*  
Francis Hochschild, *Treasurer*  
Amanda Sargisson, *Secretary*

### Members

Jennifer Abernathy  
Dorene Abt  
Cecilia Aviles  
Jessica Melman Bhatia, VMD  
Alison Carlson  
Ann Cheney Haslup  
Marie Crouch  
Shelley Daza  
Christine M. DeSanze  
Susan Dunlevy  
Angela Espinosa  
Mary Laughlin Fenton  
Roxanne Fleming  
Gingy Gable  
Sarah L. Gammill  
Carol Goldberg  
Cathy Goodman  
Laurie Grayson  
Mindy Henderson  
Frances Hochschild  
Caroline Hughes  
Corey Hyde  
Shannyn Kastner  
Chris Katzin  
Daru Kawalkowski  
Lisa Keith  
Michele Lo  
Jane Low  
Camille Marks  
Michelle Melanphy  
Michelle Molfino  
Marni Moses  
Kim Mulligan  
Ruby Multani  
Jennifer Nelson  
Paige Olson  
Michelle Pender  
Sheree Pirie  
Tanya Marietta Powell  
Anita Motwani  
Amanda Sargisson  
Lori Shigekane  
Lisa Spencer  
Lori Stein  
Joanna Steckler Goldman

Alessandra Taboni  
Ayanna Jenkins Toney  
Teresa Wong-Jones  
Carla Wytmar  
Charley Zeches

## ZOO II

Zoo II's young professionals raised \$83,300 to benefit the San Francisco Zoo during Fiscal Year 2016-17. Zoo II also expanded conservation and environmental awareness while connecting members through "Urban Safari" social hours and their signature fundraising event, Fur Ball.

William Andereck, *President*  
Willa Moore, *Fur Ball Chair*  
Art Svidler, *Secretary*  
Erin Toth, *Cultivation*  
John Motlow, *Marketing*

### Fur Ball Committee

Maggie Beckham  
Nicole Imhof  
Mandi Jacobs  
Mia Marino  
Lauren McCreery  
Mark Melnyk  
Aly Spradlin

## DOCENTS

The San Francisco Zoo's docent program included 60 volunteer guides who served as the Zoo's educational ambassadors, leading 40 tours for some 1,800 students. Docents offered diverse, grade-appropriate topics from animal adaptation to habitats and environments, and used biofacts to teach about African animals and primates.

Ardene Anderson\*  
Beth Anderson  
Nancy Atkinson  
Susan Balthazor  
Krista Barnard  
Bill Beech  
Erin Blackwell  
Kat Brunner  
Ann Clemenza  
Ken Combes  
Becky Cunningham  
Terry Davidson  
Christine Fong  
Shirley Gray  
Edith Greene  
Randy Greer  
Caroline Haas  
Terry Hallinan  
Sheila Hawthorne

Julia Heidmann\*  
Charlene Hogan  
Bob Incerti  
Monica Incerti  
Terry Jelley\*  
Eric Joe  
Jay Karve  
Kendra Langer  
Teri Lenfest  
Dexter Lowry\*  
Rosemary MacLeod  
Patricia Mar  
Susan Margolis  
Perry Matlock  
Debbie McAuliffe  
Joan McClain  
Moiria McLeod  
Donna Mollenhauer  
Shay Morris  
Donna Mumford  
Nancy Murphy  
Susan Musser  
Patricia O'Brien  
Rockey Oakley  
Betty Oryall  
Kathy Pattison  
Olivia Pellicer  
Valeria Pellicer  
Allan Ridley  
Liz Rogers\*  
Diane Rykken  
Maureen Rylance\*  
Dawn Salazar  
Juanita Schroder  
Jane Searight\*  
Gail Secchia\*  
Maxine Seward  
Marina Shultz  
Sandra Shure\*  
Chris Shuttlesworth\*  
Kathy Sieferman  
Mary Sutton  
Erin Thomas  
Adriana Thumm  
Jill Toth  
Carole Turner  
Georgeanne Wedergren\*  
Gerry Wright\*  
Akiyo Yokoi

\* Served on the Docent Executive Committee

# Annual & Capital Acknowledgements

*We gratefully acknowledge the following for their generous contributions received July 1, 2016 through June 30, 2017 to support our mission to connect people with wildlife, inspire caring for nature, and advance conservation action.*

## INDIVIDUAL GIFTS

### \$200,000 & ABOVE

Ms. Beth Anderson/Estate of Lois E. Kalb Rupert and Maryellie Johnson, Jr. Barry and Marie Lipman  
The George & Judy Marcus Family Foundation  
Mr. and Mrs. William E. Oberndorf  
Mr. and Mrs. George R. Roberts  
Schwab Charitable Fund  
Estate of Mrs. Sheila W. Veale

### \$100,000 - \$199,999

The Campbell Foundation  
Department of the Interior  
Koret Foundation  
Mr. Christopher Redlich  
Ms. Hilary Valentine and Mr. Don Listwin  
William Patrick Byrnes Trust  
William Randolph Hearst Foundation  
Charley and Robert Zeches/  
The Fontana Foundation

### \$50,000 - \$99,999

Bank of America  
Thelma Doelger Charitable Trust  
Estate of Luanne Dunlop  
Antoinette and Stephen Krajcar  
Mr. and Mrs. James H. Greene, Jr.  
IfOnly  
George Frederick Jewett Foundation  
Michele and John McNellis  
Mr. Paul Newman/The Frederick Stroh Memorial Foundation  
The Bernard Osher Foundation  
Pacific Office Automation, Inc.  
Mr. and Mrs. Mark B. Roberts  
Estate of Ida C. Volkman  
Wells Fargo Foundation

### \$25,000 - \$49,999

Apple, Inc.  
Association of Zoos & Aquariums  
Coca Cola Refreshments  
Fidelity Charitable Gift Fund  
Janie and Donny Friend  
Genentech, Inc.  
Jewish Community Endowment Fund  
Morgan Stanley

Ms. Jennifer Hammer and  
Mr. Edward Oates  
Mr. and Mrs. Edward G. Poole  
Ms. Nancy Ruskin  
Salesforce.com Foundation  
Mr. and Mrs. Les Steinhoff  
Mr. and Mrs. David Traitel  
The Frederick and Margaret L.  
Weyerhaeuser Foundation  
Mrs. Diane B. Wilsey  
Woodlawn Foundation  
Young Presidents' Organization

### \$10,000 - \$24,999

Anonymous  
Dr. and Mrs. Joshua Adler, MD  
Ms. Maria Alvarez  
Mr. William L. Andereck  
Ms. Elena M. Asturias  
Ms. Rosemary B. Baker  
Ms. Jessica Bernhardt and  
Dr. Ted Goldstein  
Frank A. Campini Foundation  
Mr. George Chambers  
Classic Escapes  
Mr. and Mrs. Matthew Cook  
Mr. and Mrs. David L. Dixon  
Dodge & Cox  
Mr. and Mrs. Alex Doll  
Mr. and Ms. Gillian Dunn  
Elite Island Resorts  
Mr. and Mrs. Robert L. Emery  
Mrs. Marion Euphrat  
Mr. and Mrs. John Flynn  
Ms. Sarah Gammill  
Mr. John J. Garthoeffner  
Ms. Nora L. Gibson and  
Mr. William L. Hudson  
Marcia and John Goldman  
Goldman Sachs Philanthropy Fund  
Mr. and Mrs. Sidney Goodwill  
Mrs. Margaret Hauben  
Mr. James E. Hays  
Mr. Stephen Hearst  
Ms. Melinda Henderson  
HGFC  
Dr. Gloria M. Hing, MD  
Ms. Nicole Lampsue Hsueh and  
Mr. Gary Hsueh  
Mr. and Mrs. Arthur K. Humphrey  
Hurlbut-Johnson Charitable Trust  
Mr. and Mrs. Michael Kahn  
Ms. Donna Egan Kampschuur  
Ms. Alexis G. Krivkovich and  
Mr. Tim Gallagher  
Reiko and Yasunobu Kyogoku  
Mr. and Ms. Richard F. Lawson Jr.  
Ms. Joan M. Murphy and Mr. Mark LeVine  
Mr. and Mrs. Dexter Lowry

Mr. and Mrs. James J. Ludwig  
Connie and Robert Lurie  
Ms. Melissa J. Ma  
Mr. Douglas Magowan  
Mr. Gregory Malin  
Mr. and Mrs. Kevin Marchetti  
Marriott International, Inc.  
Mr. Glen K. McCreedy and  
Ms. Jennifer Brittain  
McKinsey & Company  
The Joseph & Mercedes McMicking  
Foundation  
Helen and Thomas Merigan Charitable Trust  
Miller Kelly Architects, Inc.  
Ms. Elizabeth Philips Minick and  
Mr. Jeff S. Minick  
Pacific Gas and Electric Co.  
PG&E Foundation  
Tanya and Rich Peterson  
Derek and Stasia Reisfield  
Ms. Helen McKenna and Mr. Allan M. Ridley  
Ms. Courtney Roberts  
Ruth Smart Foundation  
Dr. Lori A. Sbarboro and Mr. Randy Greer  
Dr. Sarah A. Schoellkopf and Mr. William Neil  
Ms. V. Gail Secchia  
Service Systems Associates  
Dr. Bettina Steffen and Mr. Scott Setrakian  
Sharks Foundation  
Mr. Lionel A. Shaw  
Mr. and Mrs. Edward T. Sickel IV  
Silicon Valley Community Foundation  
Dr. Jill V. Spangenberg and  
Dr. Jerome A. Barakos  
Dianne and Tad Taube  
Taube Family Foundation  
Mr. David Thomason  
United Airlines  
Vanguard Charitable Endowment Fund  
Mr. and Mrs. Dennis G. Wagstaffe  
Wallis Foundation  
Wells Fargo Bank  
Wildlife Conservation Society  
Monica and Alan Zimmerman  
Mr. and Mrs. Shawn K. O'Neill

### \$5,000 - \$9,999

Aboda  
Dr. and Mrs. William S. Andereck  
Matt and Kathy Avery  
Julie W. Barney  
Mr. Patrick and Mrs. Veronica Bell  
Bellevue Foundation  
Bruce and Kelly Bligh  
Ms. Katie Budge  
Capital Group Co. Charitable Foundation  
Clinton Walker Family Foundation  
Janet and Kevin Davidson  
Ms. Anna Davis and Mr. Lewis Kaufman



Diageo  
 The EACH Foundation  
 Enterprise Holdings Foundation  
 Ernst & Young  
 Mrs. Doris Fisher  
 Fresno Chaffee Zoo  
 Goldman Sachs & Co.  
 Ms. Carol A. Ho  
 Ms. Jenny Buchanan and Mr. Daniel Houk  
 Mr. and Mrs. Paul J. Jansen  
 Ms. Carol A. Magidson  
 Mr. and Mrs. Merrill L. Magowan  
 Cynthia and Merrill Magowan Family  
 Foundation, Inc.  
 Ms. Donna L. Mollenhauer  
 Neil and Karen Pinsky  
 Mr. and Mrs. Mark O. Rand  
 Mr. and Mrs. Joseph Ratner  
 SF Zoo Docent Council  
 Mrs. Callista Shepherd Smith and  
 Mr. Scott Smith  
 Ms. Lisa Sobrato Sonsini and  
 Mr. Matt Sonsini  
 Splashthat  
 Mr. Craig M. Tighe and Ms. Ann Coulson  
 Union Square Advisors LLC  
 Mr. and Mrs. David B. Vass  
 Ms. Marylin J. McBain and  
 Mr. Anthony Villa  
 Western University of Health Sciences  
 Ms. Joreita Yohanen

**\$2,500 - \$4,999**

DMP Consulting Group  
 A. Lowe Productions  
 Mr. Bryan Andrzejewski and  
 Mr. Brian Fenwick  
 Mr. Jason M. Angeles  
 Chris and Vanessa Aycock  
 Baker & McKenzie LLP  
 Mr. and Mrs. William Bartlett  
 Mr. and Mrs. Dennis R. Burke  
 Mrs. Patricia R. Camarena  
 Mr. and Mrs. Frank Caufield  
 Chabot Space & Science Center  
 Mr. and Mrs. Wallace Chin  
 Community Foundation of Santa  
 Cruz County  
 Copper Cane Wines & Provisions  
 Mrs. Nora M. Daly  
 Mr. and Mrs. Jon Darsky  
 Del Popolo  
 Mr. and Mrs. Theodore Dobos  
 Mr. and Mrs. Michael Eisler  
 Jacqueline and Christian P. Erdman  
 Mr. and Mrs. Joshua Ets-Hokin  
 Mr. and Mrs. Matt Field  
 Foma Labs  
 Mr. and Mrs. Thomas Foote

G & C Family Foundation  
 The Lisa and Douglas Goldman Fund  
 GoPro  
 Mr. and Mrs. William E. Grayson  
 Mrs. Martha J. Guthrie  
 Hafner Vineyard  
 Hall Wines  
 Ms. Anette Harris  
 Mr. Thomas B. Hazuka and  
 Mr. Anthony A. George  
 Ms. Blair Heath and Mr. Gary Gerttula  
 Dr. Elizabeth Hume and Dr. Jay Jacobs  
 Ms. Ayanna Jenkins Toney  
 E. Richard Jones  
 Mr. and Mrs. Manuel Karell  
 Mr. and Mrs. Ron Kaufman  
 Kaur Photography  
 Mr. and Mrs. David Kennedy  
 The Kinnoull Foundation  
 Western University of Health Sciences  
 Ms. Sheila H. Lee and  
 Mr. Jonathan J. Davies  
 Life Factory  
 Lineage Logistics  
 Ms. Janette Mandema  
 Ms. Gerry E. Manning  
 Ed and Betty Manoyan Foundation  
 Ms. Patricia S. Mar  
 Ms. Pat M. Montoure  
 Mr. and Mrs. Jeffrey J. Morris  
 Ms. Kimberly Mulligan  
 Mr. and Mrs. Amrit Nagpal  
 Mr. Andrew J. Nance and  
 Mr. James Maloney  
 Mr. and Mrs. Jonathan Neri  
 Mr. Jerry E. Nolan  
 Mr. and Mrs. Ronald K. Olander  
 Mr. Matthew Oren  
 Ms. Julie Packard  
 Mr. and Mrs. Steve Pardini  
 Ms. Katherine Pattison  
 Mrs. Marianne H. Peterson  
 Mr. John P. Phillips  
 Ms. Tanya M. Powell  
 Mr. and Mrs. William Rempfer  
 San Francisco Foundation  
 Schoellkopf Family Foundation  
 Laura and Greg Spivy  
 Mr. John F. Strazzarino  
 Mr. and Mrs. Paul Summers  
 Sylvanus Charitable Trust  
 Tilt Textiles, Inc.  
 Tomfoolery  
 Mr. John Weaver  
 Mr. and Mrs. Andrew Woods  
 Ms. Surya Yalamanchilli

**\$1,000 - \$2,499**

Adroll Inc.  
 Ms. Sudha Varadarajan and Mr. Arish Ali  
 AllianceBernstein  
 Mr. and Mrs. Steve Ashley  
 Auction City  
 Mr. Christopher L. Avery  
 Mr. Wilkes Bashford and Mr. Jack Guillaume  
 Mr. Frank J. Bator  
 Mr. and Mrs. Max Beatty  
 Mr. Darren Bechtel  
 William and Susan Beech  
 Mr. Joseph Belpasso and Mr. Eric Maul  
 Ms. Brooke Berg  
 Mr. and Mrs. John Bertke  
 Mr. Matthew Bettonville  
 Mr. and Mrs. Chris Bishko  
 Mr. Marc D. Blakeman  
 Mr. and Mrs. Zack Bongiovanni  
 Alexander and Abigail Bui  
 Mr. and Mrs. Donald Carlson  
 Dr. and Mrs. Jon W. Churnin  
 Cloquet Trust  
 Dr. David L. Conant and  
 Dr. Rebecca E. Conant  
 Constellation Brands, Inc  
 Ms. Irene A. Crescio  
 Mr. John Curcio and Ms. Ann Gabrys  
 Del Popolo  
 Domaine Carneros  
 Mr. and Mrs. Michael Donohue  
 Mrs. Joyce M. Dubay  
 Mr. and Mrs. Andrew Duffell  
 Eagle Creek Foundation  
 Earthbath  
 Ms. Jennifer Ellard and Mr. Michael Valera  
 Mr. Greg Endom and Ms. Vickie Desofi  
 Ms. Anna Enea  
 Mr. and Mrs. Joshua Ets-Hokin  
 Mr. and Mrs. Thomas C. Field  
 Mr. and Mrs. Frank Fischer  
 Mr. and Mrs. Robert J. Fisher  
 Mr. and Mrs. David Fleishhacker  
 Ms. Roxanne C. Fleming and  
 Mr. David Soward  
 Mr. and Mrs. Hugh W. Foster  
 Ms. Helen Gan  
 Mr. Theodore Gazulis  
 Mrs. Mariela Gerstein  
 Mr. and Mrs. Gordon P. Getty  
 Mr. Gary Gieseker  
 Mr. Richard P. Gill  
 Mr. and Mrs. Clinton Gilliland  
 Mr. Mike Golaszewski and Ms. Petra Campos  
 Mr. and Mrs. Kingman Gordon  
 Mr. and Mrs. Mitchell Grandstaff  
 Mr. and Mrs. Richard Griffith  
 Ms. Ann T. Hale  
 Hall Capital Partners LLC

# Annual & Capital Acknowledgements (cont'd.)

Mr. and Mrs. John Hansen  
Mr. and Mrs. Robert D. Heller  
Ms. Wendy Hepworth  
Mr. Quinn Higgins  
Mrs. Melanie Hoefler  
Sue Hoeschler Melanson  
Mr. Adam Holt  
Mr. Ron Holthuysen  
Hotel Healdsburg  
The Justin and Michelle Hughes  
Foundation  
Mr. and Mrs. Phillip Hyett  
Mr. Syed Imam  
Mr. William Ivie and Ms. Heather  
M. Murphy  
Mrs. Dana Jackson and  
Mrs. Loreen Jackson  
Mr. Loren Jones  
JP Morgan  
Mrs. Daru H. Kawalkowski  
Ms. Lisa Keith  
Mrs. Amber La  
Lagunitas Brewing Co.  
Mr. and Mrs. Jude P. Laspa  
Diane and Dave Luders  
Mr. and Mrs. David MacKnight  
Ms. Lynnette Maher and  
Mr. Neil McCallion  
Mr. Jonathon Martinsen  
Mrs. Susan Dugger C. Mathison  
Mr. and Mrs. Justin McCarthy  
Mr. and Mrs. Michael P. McCarthy  
Ms. Joan E. McClain  
Mr. Gregory McClune and  
Mrs. Karin McClune  
Ms. Cheryl R. McHale  
Mr. and Mrs. James C. McIver  
Mr. and Mrs. Michael McKenna  
Lindsay and Jeffrey McNulty  
Mr. John McNulty  
Mrs. Anne McWilliams  
Ms. Laura Miller and Mr. Matt Harold  
Ms. Susanne I. Miller and  
Ms. Tiffany Rosso  
Mrs. Michelle L. Molfino  
Anna & Mason Morfit  
Mr. and Mrs. Jeffrey J. Morris  
Regina and G. Robert Muehlhauser  
Mr. and Mrs. William Mulligan  
Mr. Sam Muppalla and  
Mrs. Meera Sripathy  
Eric Murphy and Timothy Wu  
Oakland Zoo  
Ms. Katherine Orr and Mr. Erik Steen  
Mr. Erwin O'Toole  
Dr. and Mrs. Michael Overfield  
Ms. Deepa Pakianathan and  
Mr. Phil Pemberton  
Mr. and Mrs. Edward Paulus

Mr. Tyler Petersen  
Ms. Kerri J. Pinchuk  
PSN Family Charitable Trust  
Mr. and Mrs. Christopher Ridley  
Ms. Beverly A. Riehm and  
Mr. Randall Borcharding  
Mr. and Mrs. Stephen B. Robie  
Mr. and Mrs. Joe A. Rodriguez  
Mr. and Mrs. Thomas Rohlen  
Mr. and Mrs. Martin Romo  
Ms. Jackie Rooney  
Ms. Catherine Rossi-Roos and  
Mr. Mark Roos  
Mr. and Mrs. Peter Santos  
Ms. Alexandra Schardt  
Ms. Barbara Scott  
Ms. Jane E. Searight  
Mr. James Sefton  
SHN Theatres LLC  
Monique Shapiro  
Ms. Marina Shultz and Mr. Alec Moss, Jr.  
Ms. Natalie Shuttleworth  
Mr. and Mrs. Stephen V. R. Spaulding III  
Ms. Sarah J. Stanton  
Mr. and Mrs. Mark Stapp  
Mr. and Mrs. Joseph Stevens  
Mr. and Mrs. Daniel Stone  
Mr. Joseph P. Stretch  
Sugar & Spun  
Ms. Terri L. Tienken  
TrueCar, Inc.  
Two Road Hotels  
Dr. Randall H. Vagelos and  
Dr. Julie Wissink  
Ms. Catherine Valentine and  
Mr. Loren Jones  
Mr. and Mrs. Bob Van Zant  
Ms. Dianna Vaughan  
Mr. and Mrs. George Vidalakis  
Mr. John Viola and Ms. Monique Shapiro  
Mr. and Mrs. Jon C. Winston  
Mr. and Mrs. Michael Wong  
Mai Mai and Paul Wythes  
Ms. Kelsey Yang

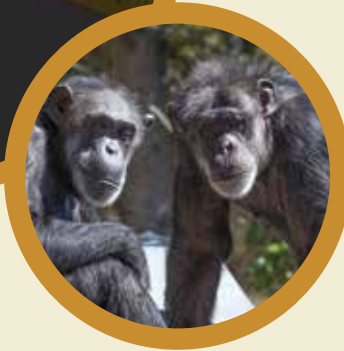
## 2016–2017 CORPORATE PARTNERS

*Our thanks to these corporate partners for their monetary and volunteer support.*

Adroll, Inc.\*  
Amazon  
Baker & McKenzie LLP\*  
Classic Escape  
Dodge & Cox  
Enterprise Holdings Foundation\*  
Ernst & Young\*  
Genentech, Inc.\*  
Goldman Sachs & Co.\*  
GoPro\*  
Hall Capital Partners LLC\*  
IfOnly  
Marriott International, Inc.\*  
McKinsey & Company  
MK Think\*  
Morgan Stanley\*  
Pacific Gas & Electric Co.  
Salesforce.com Foundation\*  
SHN Theaters, LLC  
True Car, Inc.\*  
Vanguard Charitable Endowment Fund

\*Renew the Zoo/Corporate Members

Coming in 2018 – Great Ape Passage!



Our Great Ape Project is bringing big changes for our primates. We broke ground in March 2017 on a multimillion dollar renovation of the Pachyderm Building to create a larger habitat for our great apes and a new sky bridge called the Jim Ludwig Passage. This overhead skywalk will link our existing chimpanzee grottoes, home to our chimpanzees *Cobby*, *Maggie*, and *Minnie* to this new indoor space.

The expansion will provide the ample space to grow SF Zoo's chimpanzee troop, providing greater opportunities for these primates to socialize in an environment and in numbers aligned to optimal troop size. It also will incorporate accommodations, including bringing in other great ape species to the Zoo, such as orangutans, as well as expand care facilities for all of our primates as they advance to geriatric age. We look forward to opening the doors of this new exhibit in summer of 2018!

**THE MISSION**  
OF THE SAN FRANCISCO  
ZOOLOGICAL SOCIETY IS TO  
**CONNECT** PEOPLE WITH WILDLIFE,  
INSPIRE **CARING** FOR NATURE AND  
ADVANCE **CONSERVATION** ACTION.



[www.sfzoo.org](http://www.sfzoo.org)